

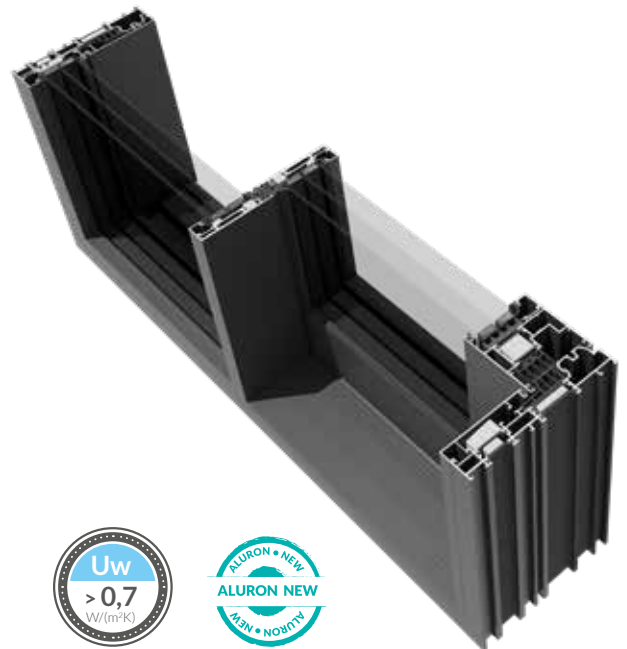


Lift and slide door system **AS 178HS PRO SLIM** in **ULTRA** variant

The first minimalist solution for HST doors. The new **ULTRA** variant of the AS 178HS PRO SLIM system was created as an alternative to complicated and expensive narrow-profile solutions.

It is used to construct large-size lift-and-slide doors with the narrowest center post available on the market, which is only 25 mm. The **ULTRA** variant is an ideal solution for customers who expect a unique, minimalist design in an economical version.

The system is distinguished by its versatility and high performance quality thanks to the use of a tight labyrinth strip, modern TPE gaskets and ANTI-BI-METAL technology that prevents door deformation due to significant temperature differences.



SELECTED SYSTEM PARAMETERS

from 0.7 W/m ² K	class 4	class 9A	class C3/B3
Thermal insulation Uw	Air permeability	Watertightness	Resistance to wind load

DESIGN & FUNKCJONALNOŚĆ



Option of constructing structures in all fitting patterns.



Standard way of installing glass. The glass is glued to only one edge of the narrow mullion profile.



The solution of a narrow mullion - 25 mm.



Possibility to hide the door frame in the insulation layer.



Possibility of integration with a smart home system for management via smartphone and/or touch panel.



Possibility of making a pocket door sliding structure using standard components of the AS 178HS PRO SLIM system.



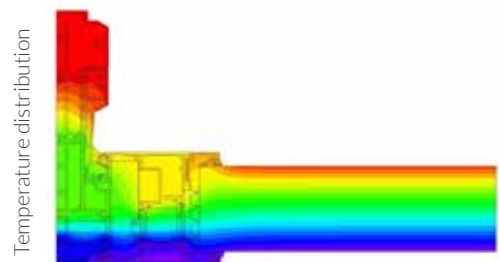
A wide range of fittings from renowned suppliers: Siegenia, G-U, HAUTAU, MACO.



Possibility of constructing all-glass corners at an angle of +/- 90 degrees.



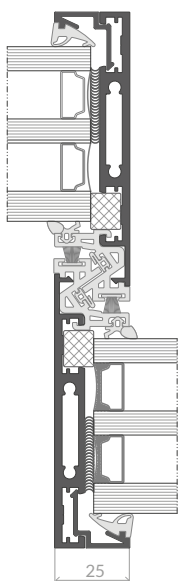
It is possible to equip the sliding doors in Ultra variant with elegant, multi-colored LED lighting.



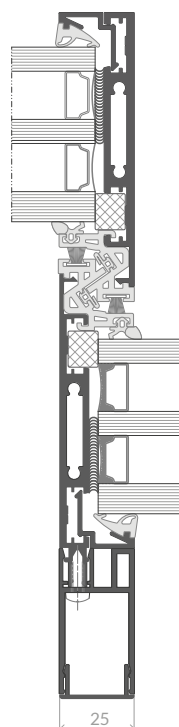
SYSTEM CHARACTERISTICS

3300 mm	3300 mm	600 kg	37 mm	25 mm	59 mm	78 mm
Max. leaf height	Max. leaf width	Max. leaf weight	Min. visible frame width	Narrow mullion	Max. glazing packet thickness	The depth of sash

Basic version



Version with a static box



Version with LED backlight

