

AS 75P

panel door system

The AS 75P system is a system of panel door constructions made with triple-chamber profiles, having excellent insulation and technical parameters. System is designed for prefabricated, thermally insulated doors with a panel mounted on the entire surface of the sash. It ideally matches smart homes, modern and classic buildings. Door panels in AS 75P system are intended for individual installation and window display. Solid built, durability of aluminium and plenty of design choices ensures long-term durability and aesthetics.

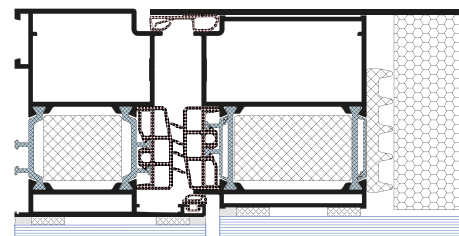
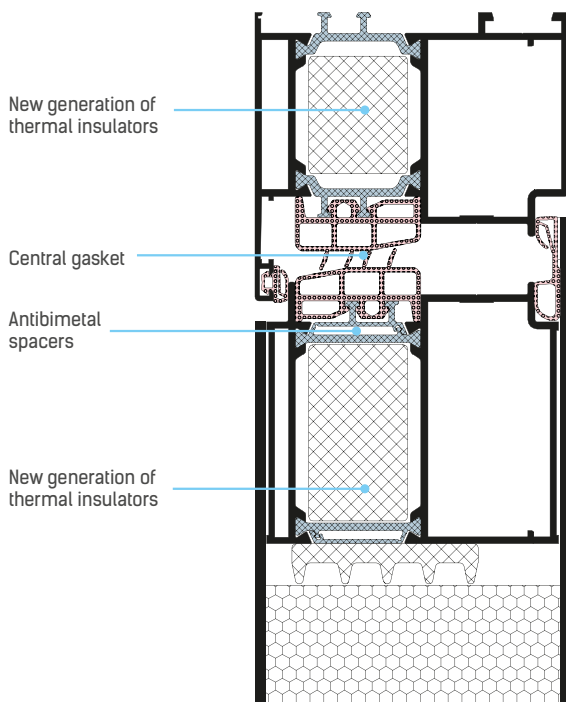


PANEL DOORS IN AS 75P SYSTEM:

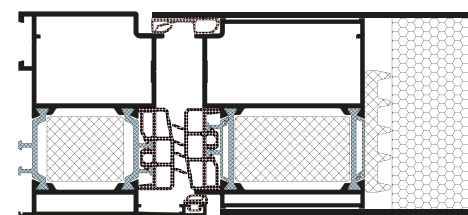
- Meeting thermal parameter standards till 2021
- Aesthetics, durability and functionality of aluminium
- Capability of individual panel designs – milling shapes and holes
- Three versions of the panel: opaque, with translucent elements and fully glazed
- Single or double-side flush finish
- Multipoint locks
- Adjustable threshold seal
- Profiles made using ANTI-BI-METAL technology
- Central gasket in doors
- Door frame and sash depth: 75mm
- Wide range of colours
- Single or double sash door with top or side lighting
- Inward or outward opened doors

SELECTED FEATURES AND SYSTEM PARAMETERS

Depth of frame / sash	75 mm
Door thermal insulation Ud	from 0,82 W/m ² K
Hinges available	surface
	roller
	hidden
Waterproof	E 900 Pa
Air permeability	IV class
Wind load resistance	C3/B3



Enamelled glazing variant



Panel variation